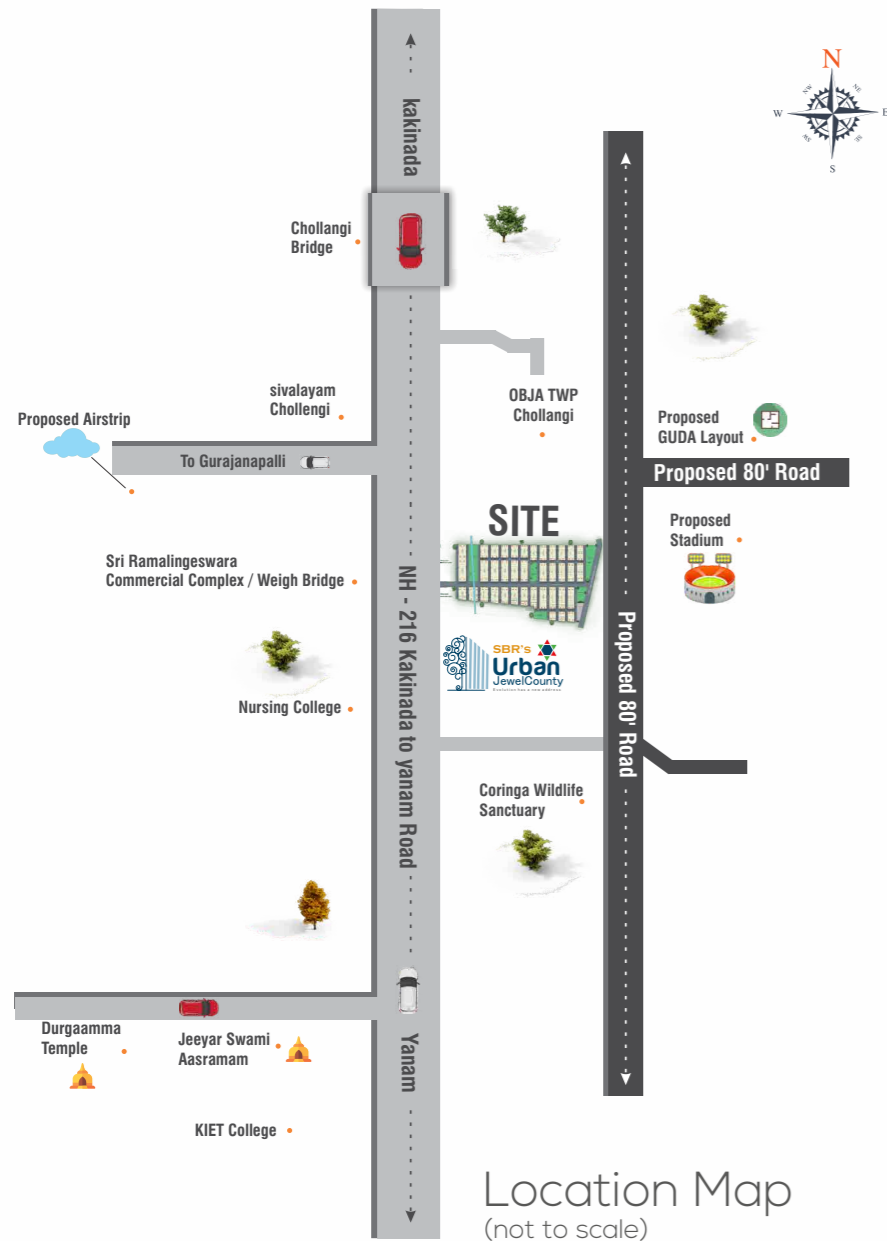


Every thing "U" need is here



Location Map
(not to scale)



SBR GROUP :

C/o SBR Horizon, Sy No.24/5, Seegehalli, Bidarahalli Hobli, Whitefield, Bangalore - 560 067.

www.sbrgroup.in



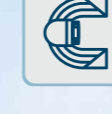
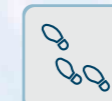
SITE ADDRESS :

SBR'S URBAN JEWEL COUNTY

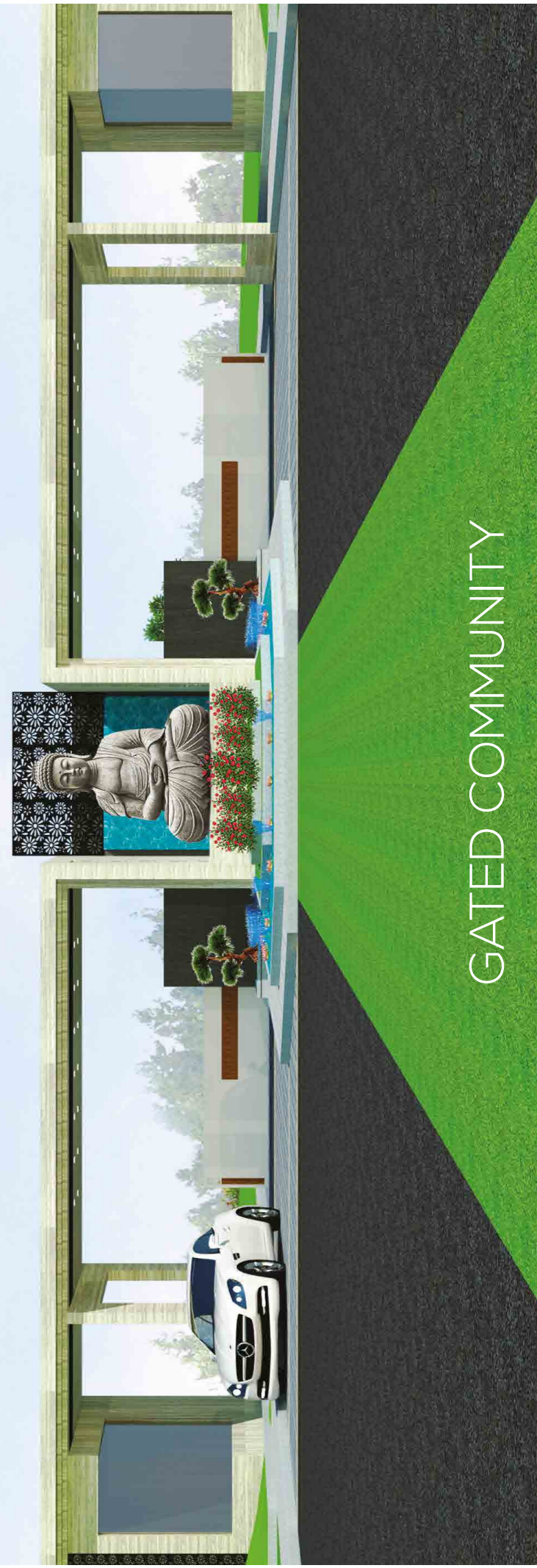
NH 216, Kakinada to Yanam Road, Chollangi Village, Tallarevu Mandal, East Godavari District, A.P.



Embrace the
— Majestic life. —



AMENITIES



GATED COMMUNITY

8883 608 608

www.sbrgroup.in

AP RERA NO: P04370011397

Note: This Brochure is purely conceptual and not a legal offer. Area is Tentative and actual areas arrived at completion of the Plots. The promoters reserve the right to make changes in plans & Specifications as deemed fit.



Project Highlights

- 52+ Acres of Mega gated community
- 5000 Sq.Ft of Club House
- All round compound wall
- Avenue plantation
- Designer street lighting
- Rainwater harvesting pits
- 24-hr security
- 24-hr water supply
- CC Cameras at the entrance
- BT internal roads – 80 Ft Main Road and 40 Ft Internal Roads
- Parks along with a Temple

Amenities

- Children's Play Area
- Amphitheatre
- Skating Rink
- Tennis Court
- Half basket ball court
- Excellent landscaping
- Jogging track

Landscape Elements

- Chess Garden
- Meditation Garden
- Hop Scotch
- Band Stand
- Reflexology



Luxurious Club House: The mega club house of 5,000 Sq.Ft where luxury is the major point

- Grand Lobby
- Multi-Purpose Party Hall
- Party Lawn
- Library with reading room
- Indoor Game Zone
- Swimming Pool
- Gym
- Spa



Easy Accessibility

- Adjacent to Kakinada - Yanam NH-216 Road
- Near By Proposed Aero Space Center
- KIET Engineering College 8 Km
- 6km From Kakinada Main Road
- Jeeyar Swamy Ashram (G Vemavaram) 2 Km
- Coringa Wildlife Boating 2 Km
- Near to Reliance Industries Ltd & GSPCL
- Adjacent to Proposed GUDA Layout & Stadium.

